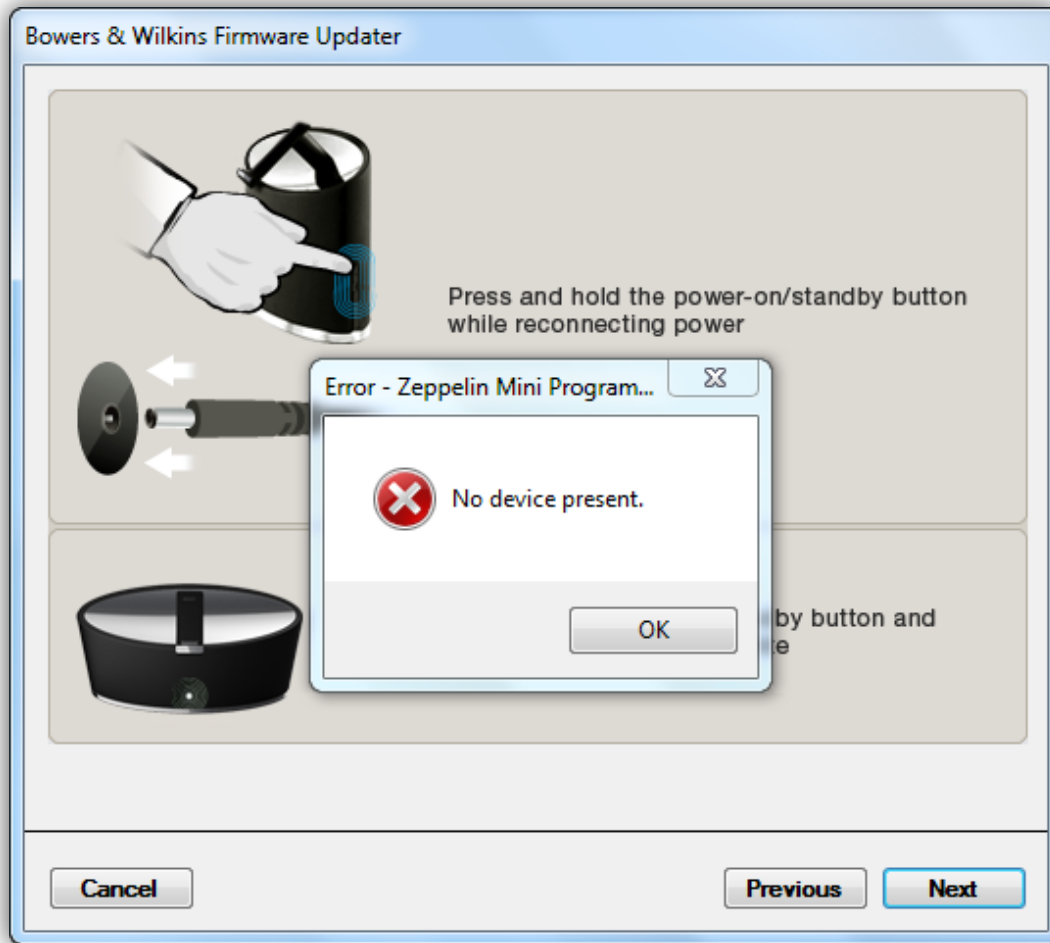


The following guide is intended to manually install device drivers for the Zeppelin Mini in Windows 7. If the error shown below is received when attempting to update the firmware on the Zeppelin Mini, please follow the steps below to ensure the drivers are installed.

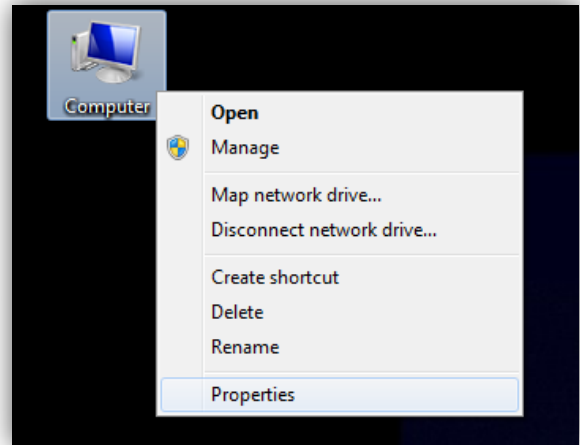
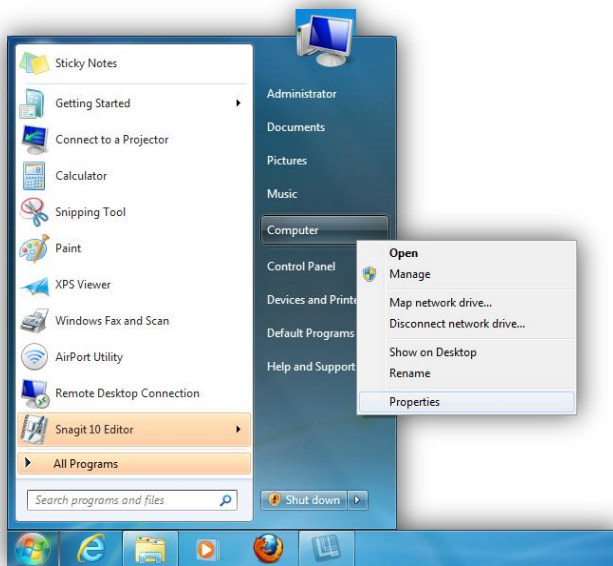


## Driver Installation Procedure

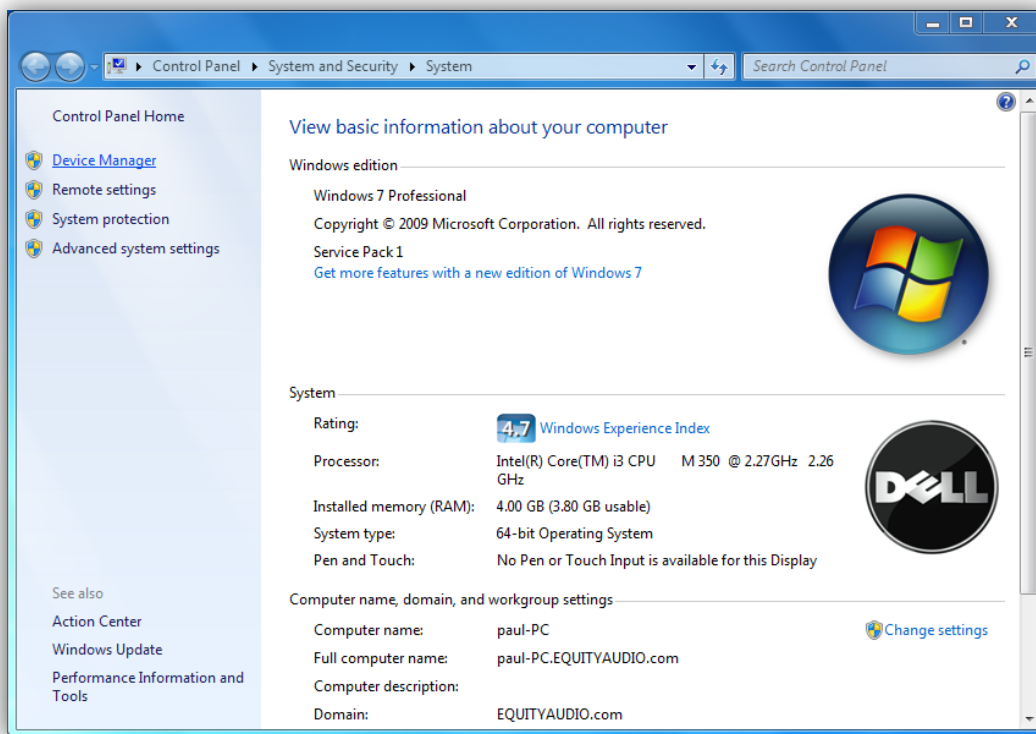
1. Disconnect the DC power cable from the power adapter to the Zeppelin Mini.
2. Connect a USB cable to a USB port on the computer.
3. Press and hold the "On/Standby" button on the Zeppelin Mini while reconnecting the DC power cable.
4. Wait for the LED to turn white, and then release the "On/Standby" button.

# Bowers & Wilkins

5. On the computer, if there is a desktop icon labeled "Computer", right click on this and select "Properties". If there is no icon labeled "Computer", click "Start", then right click on the "Computer" selection on the right side of the Start menu and select "Properties".

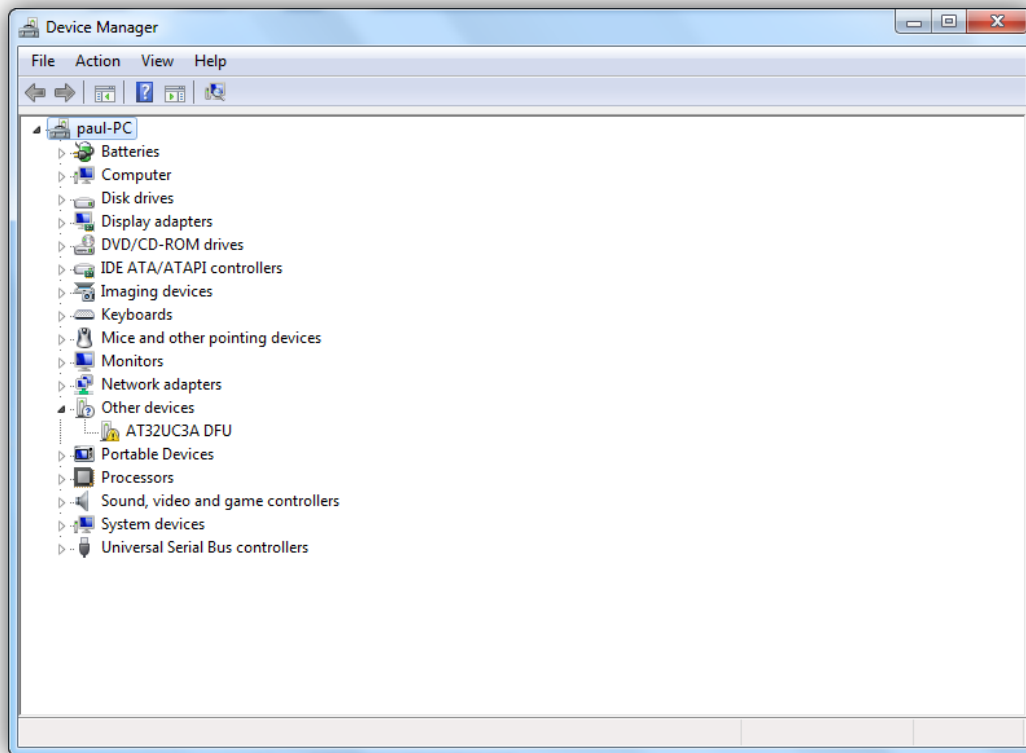


6. From the System window that opens, click "Device Manager".

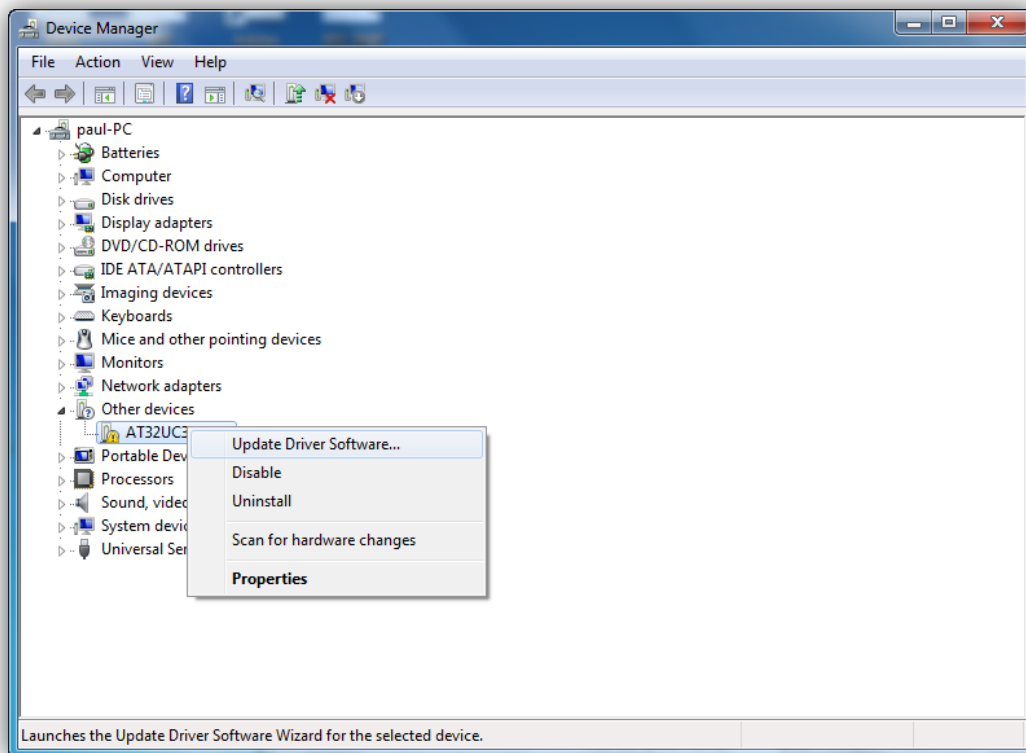


# Bowers & Wilkins

7. In the Device Manager window, there should be a device listed under “Other Devices” with a yellow exclamation point next to it.

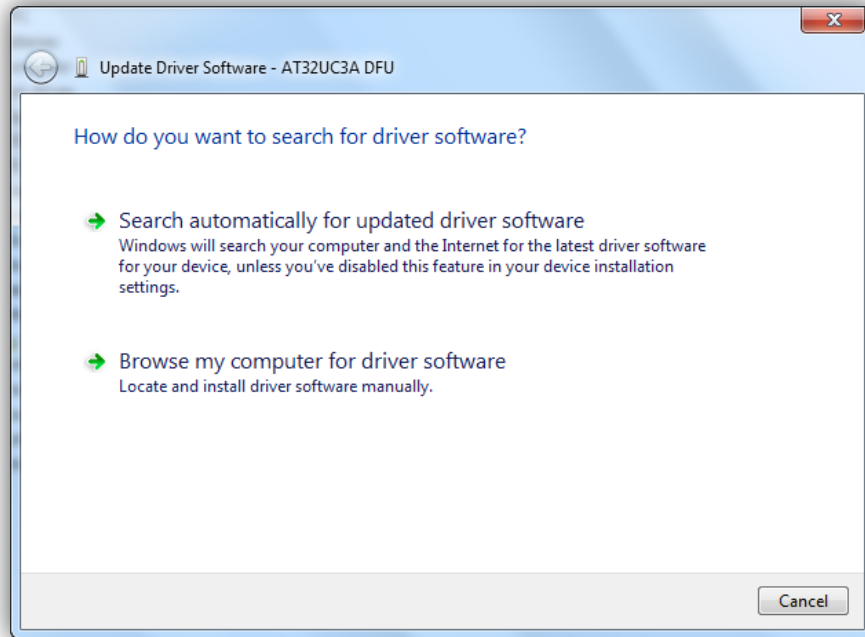


8. Right click on the device with the yellow exclamation point and choose “Update Driver Software...”

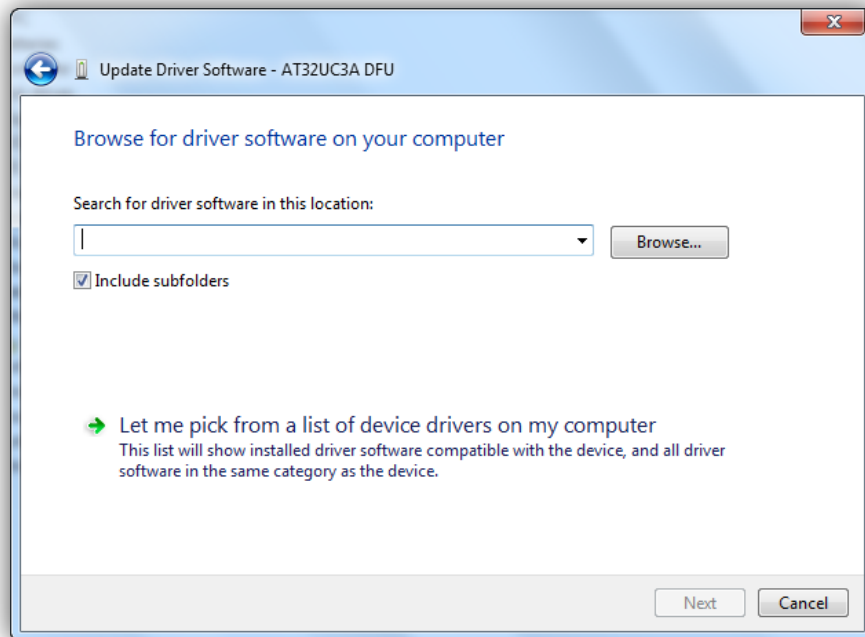


# Bowers & Wilkins

9. When the Update Driver Software window opens, choose “Browse my computer for driver software”



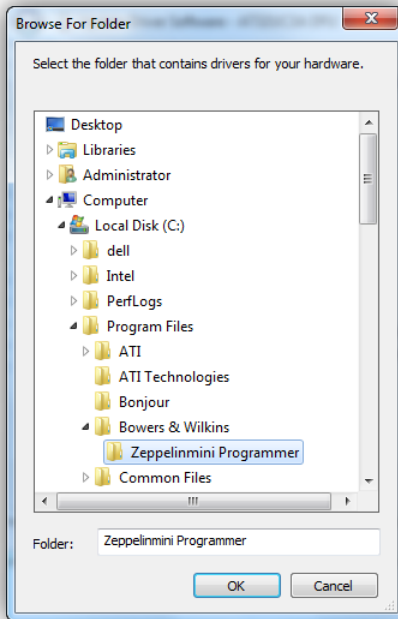
10. Click the “Browse” button to choose a folder.



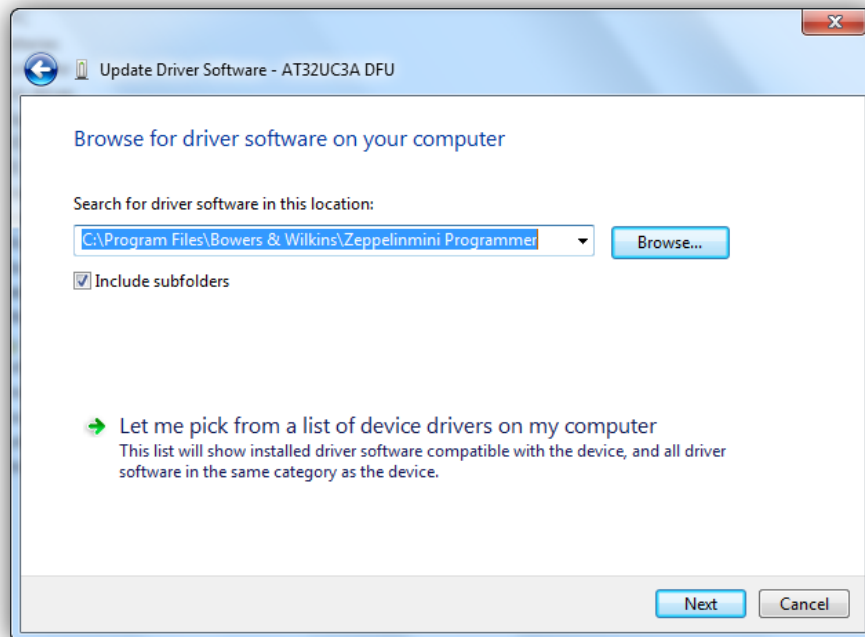
# Bowers & Wilkins

11. When the Browse For Folder window opens, you will need to search for and select the folder where the Zeppelin Mini Programmer software was installed. The default folder is “C:\Program Files\Bowers & Wilkins\Zeppelinmini Programmer”

12. When the correct folder is selected, the “Ok” button should be selectable. Click “Ok”

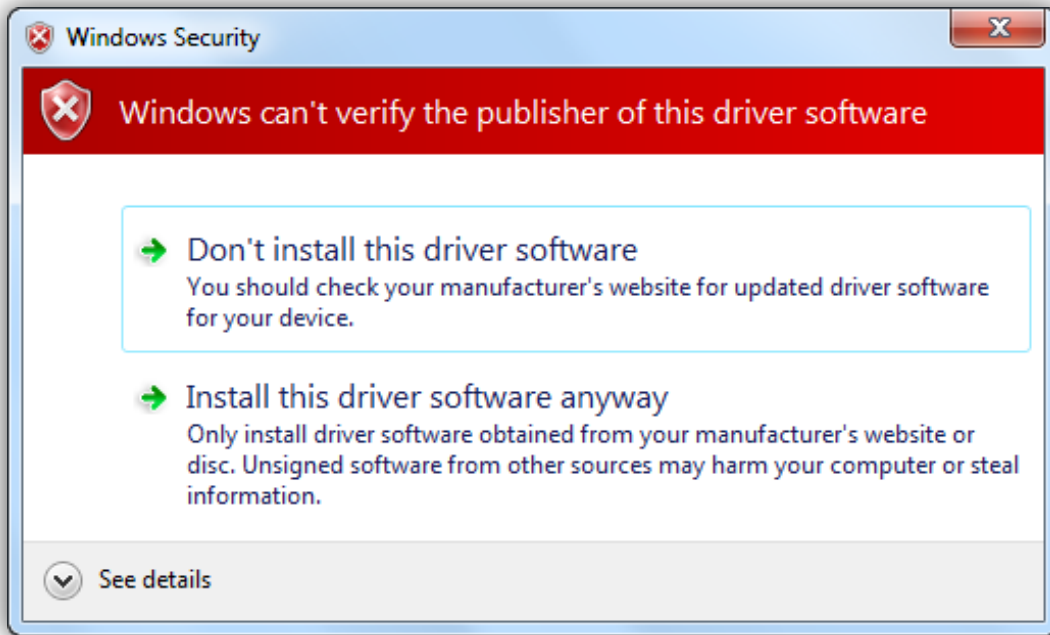


13. The Update Driver Software window should reopen, now showing the folder location that was selected. Click “Next”

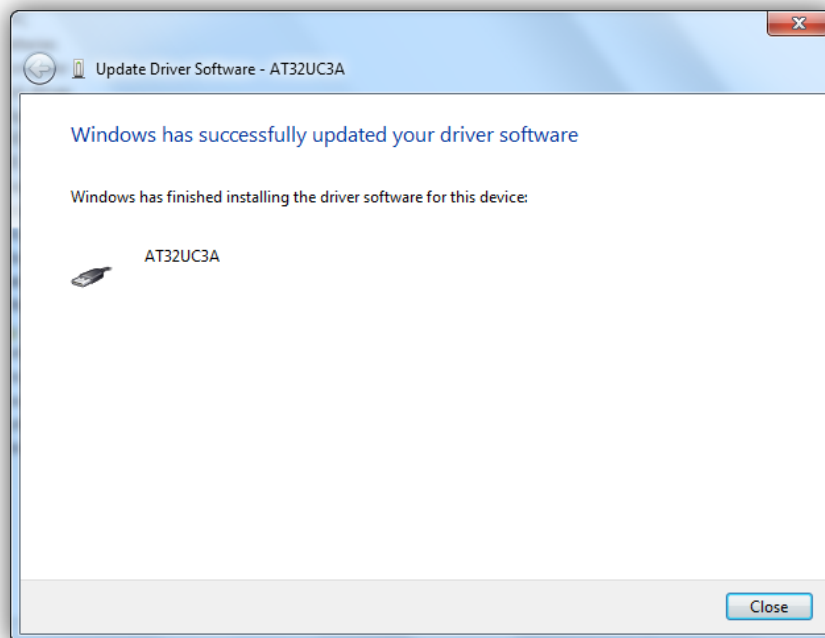


# Bowers & Wilkins

14. A red warning box will appear stating that Windows can't verify the publisher of the driver software. Click "Install this driver software anyway"

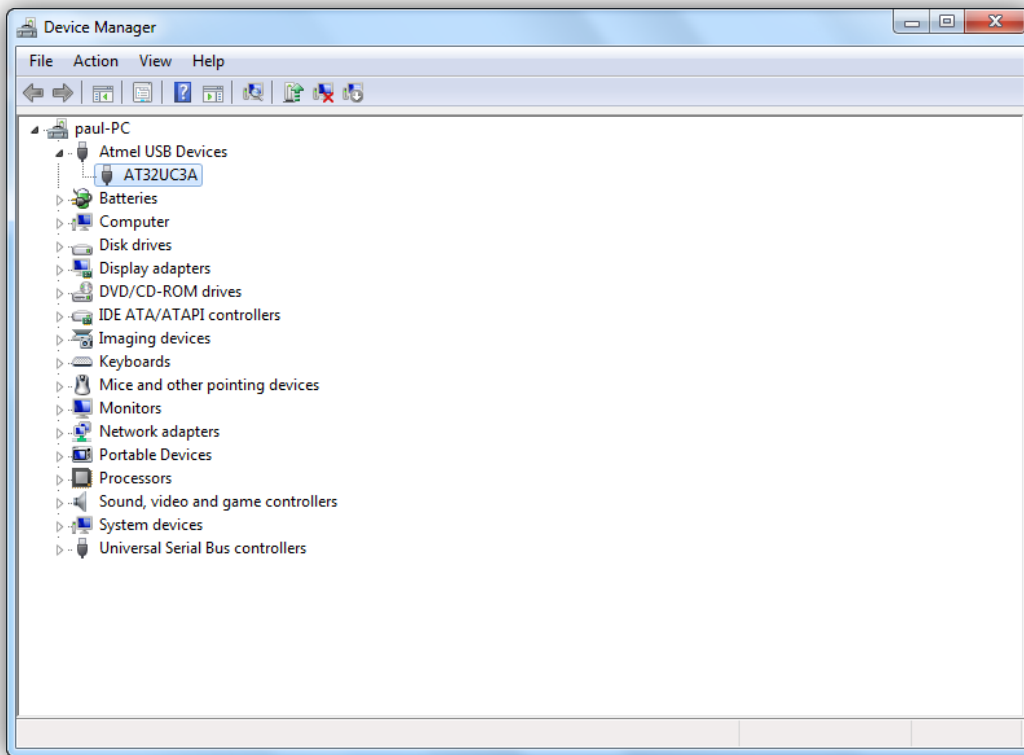


15. Once the install completes, a window will open stating that Windows has successfully updated the driver software.



# Bowers & Wilkins

16. The installed driver should now appear in the Device Manager window under “Atmel USB Devices”.



17. At this point, go back to the Zeppelin Mini Programmer and retry the firmware update process. If the driver update has been performed correctly the update software should now proceed normally.

